

VILLAS ON THE GREEN

AT WOODGATE

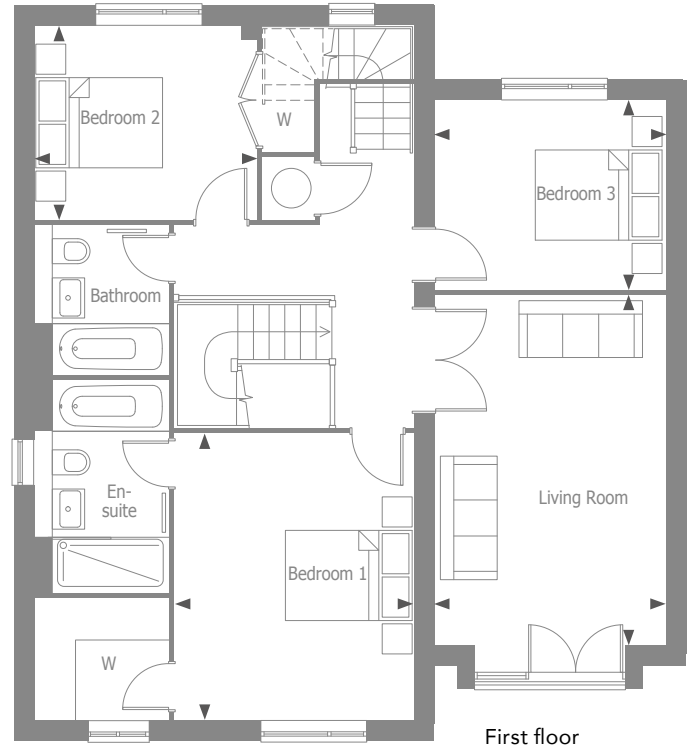
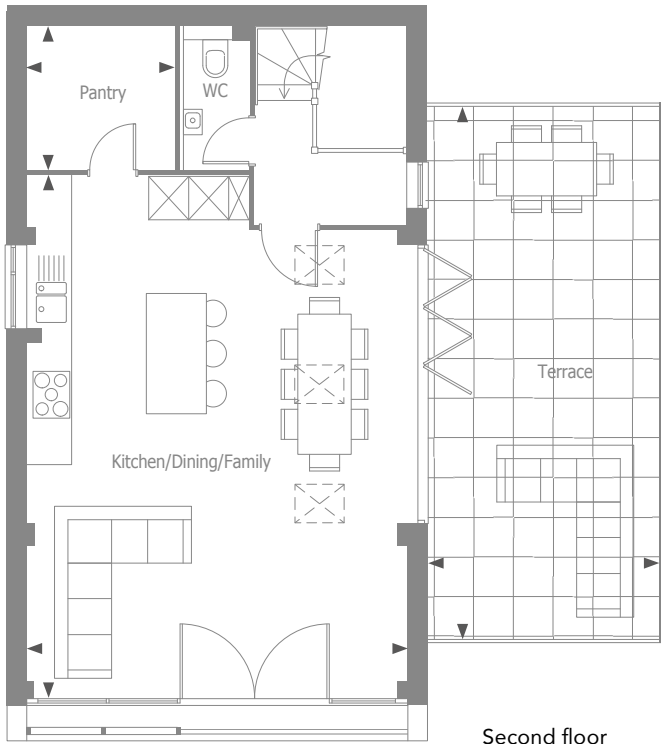


Style Two

Numbers 257, 263, 264 & 271



THAKEHAM



Kitchen/Dining/Family

7.82m x 5.64m 25'8" x 18'6"

Bedroom 1

4.26m x 3.55m 14'0" x 11'8"

Bedroom 2

3.31m x 2.88m 10'11" x 9'6"

Bedroom 3

3.43m x 2.81m 11'3" x 9'3"

Bedroom 4

3.68m x 3.61m 12'1" x 11'10"

Living Room

5.20m x 3.43m 17'1" x 11'3"

Study

3.98m x 3.64m 13'1" x 11'11"

Utility

2.81m x 1.96m 9'3" x 6'3"

Pantry

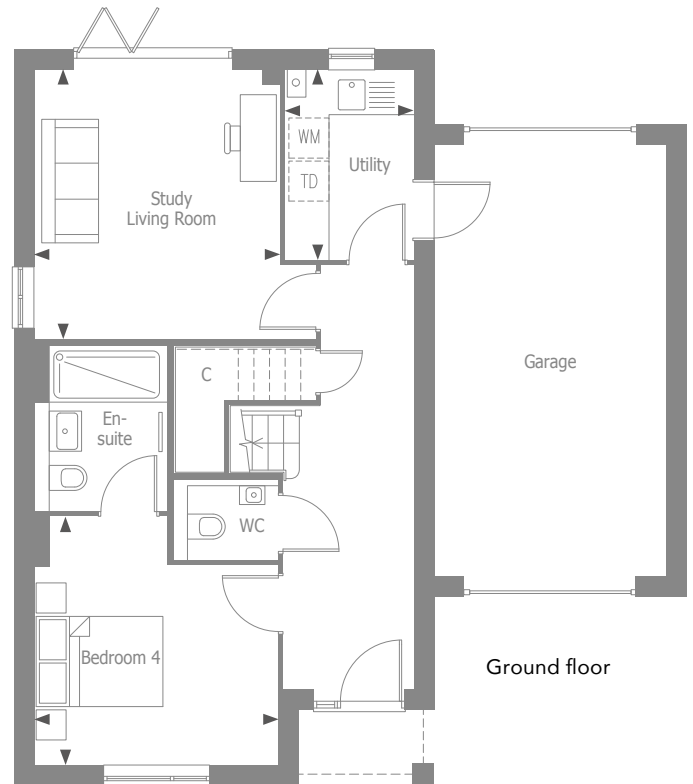
2.13m x 2.17m 7'0" x 7'1"

Terrace

8.16m x 3.48m 26'6" x 11'4"

Total

2184 sq ft



WM Provision for washing machine C Cupboard
 TD Provision for tumble dryer W Wardrobe



THAKEHAM

01293 225 614
mywoodgate.co.uk

Floorplans shown are for approximate measurements only. All measurements may vary within a tolerance of 5% and are not intended to be used for carpet or appliance sizes or items of furniture. Furniture layouts are indicative only. Accordingly, due to Thakeham's policy of continuous improvement, the finished product may vary from the information provided. All customers are advised to contact Thakeham to ascertain the availability of any particular property. April 2022.