



THAKEHAM



The Brockham

Woodgate

PEASE POTTAGE



THAKEHAM

GROUND FLOOR



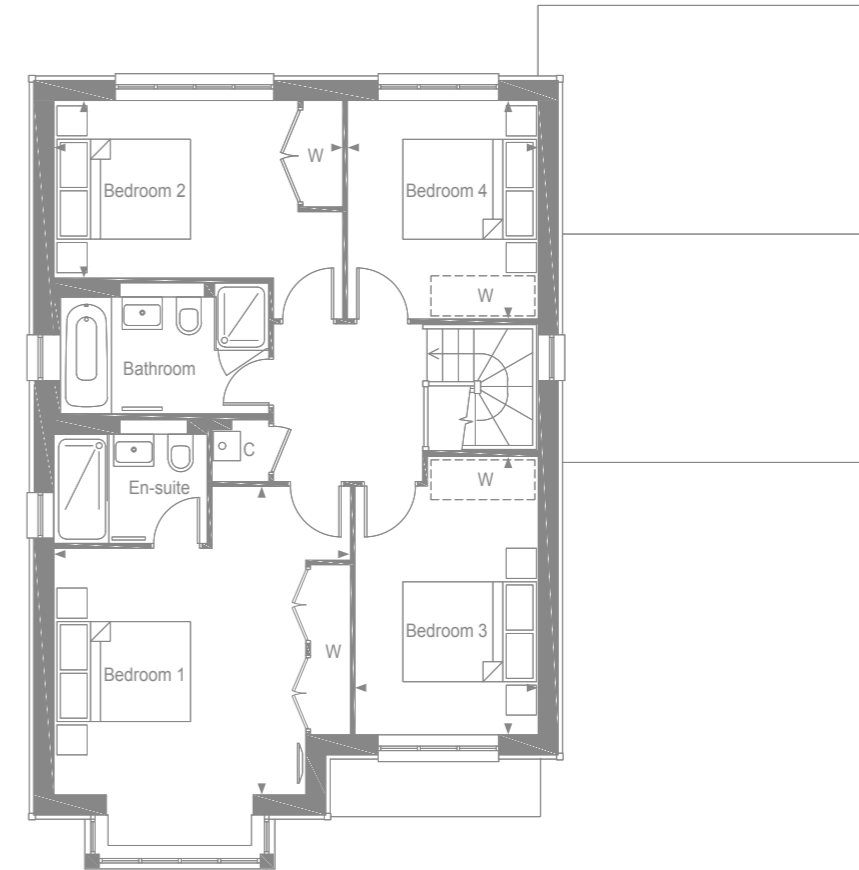
Kitchen/Dining /Family Area	7.21m x 5.38m	23'6" x 17'6"
-----------------------------	---------------	---------------

Living Room	4.85m x 4.21m	15'9" x 13'8"
-------------	---------------	---------------



THAKEHAM

FIRST FLOOR



Bedroom 1	4.59m x 4.41m	15'0" x 14'4"
-----------	---------------	---------------

Bedroom 2	4.29m x 2.62m	18'5" x 15'0"
-----------	---------------	---------------

Bedroom 3	4.14m x 2.70m	13'5" x 8'8"
-----------	---------------	--------------

Bedroom 4	3.24m x 2.82m	10'6" x 9'2"
-----------	---------------	--------------

W - Wardrobe
 C - Cupboard
 - Space for Wardrobe



THAKEHAM

THE BROCKHAM SPECIFICATION

BEAUTIFULLY DESIGNED KITCHENS

- Contemporary kitchen designs
- Soft close doors and drawers
- Laminate worktop and upstand
- One and half bowl stainless steel sink, with mono sink mixer tap by Vado
- AEG stainless steel double oven
- Induction hob with pull out extractor hood
- Energy efficient integrated AEG dishwasher
- Energy efficient integrated AEG 70/30 split fridge/freezer
- Plumbing for washing machine and separate dryer in the utility

STYLISH BATHROOMS

- Contemporary white sanitaryware, with chrome accessories by Vado
- Wall hung concealed cistern WC
- White steel enamel bath with over bath shower screen
- Wall mounted bath/shower mixer tap by Vado
- Chrome summer use towel warmers with TRVs
- Saloni wall tiling to selected areas
- Recessed cabinet in bathroom or en-suite dependant on layout
- Polished edge mirror over sanitaryware to selected rooms

INTERIOR FINISHES

- Saloni floor tiling to hall, cloakroom, kitchen/dining, utility and bathrooms, with Cormar carpet in all remaining areas
- White painted flush doors, with contemporary ironmongery
- White painted staircase and newel posts with white oak handrail
- Coordinated single paint finish to walls and satinwood paint finish on all internal joinery
- Telescopic aluminium loft ladder with handrail

ECOLOGY

- Hedgehog holes through gravel boards in fencing, to provide routes for hedgehogs
- Hedgehog houses in communal landscaped areas

SECURITY AND PEACE OF MIND

- Mains fed smoke/heat detector, with battery backup
- Mains fed carbon monoxide detector, positioned adjacent to gas boiler
- 10 year NHBC Buildmark Warranty, including 2 year defect and emergency out of hours cover

EXTERNAL

- Timber external entrance door
- UPVC double glazed windows with bi-folds to the dining/family area
- Closeboard fencing to rear gardens
- Landscaped front gardens and turfed rear gardens
- Paved paths and patio areas
- External tap in rear garden

HEATING, ELECTRICAL & LIGHTING

- Energy efficient combination boiler
- Underfloor heating on ground floor with gas fired radiator heating on first floor
- WiFi programmable heating controls
- LED downlights to hall, landing, kitchen/dining room, utility, bathroom, en-suite & cloakroom with pendant lighting in remaining areas
- White sockets and switch plates in all areas (stainless steel in kitchen) with integrated USB charging in kitchen and bedrooms
- Multi-gang grid switch for kitchen appliances
- Chrome shaver socket in all bathrooms
- Lighting to all external doors with internal switch
- Wired for terrestrial TV to hall media cupboard & digital aerial installation to loft space
- Wired for SkyQ to living room and alternative second position with blank plate, and all other rooms via SkyQ technology
- TV/satellite point in living room and secondary TV points in all bedrooms
- Electric car charging point

Woodgate
PEASE POTTAGE



Floorplans shown are for approximate measurements only. All measurements may vary within a tolerance of 5% and are not intended to be used for carpet or appliance sizes or items of furniture. Furniture layouts are indicative only. Accordingly, due to Thakeham's policy of continuous improvement, the finished product may vary from the information provided. All customers are advised to contact Thakeham to ascertain the availability of any particular property. March 2022.

Paper | Supporting
responsible forestry
FSC® C151126