



THAKEHAM



The Chelwood

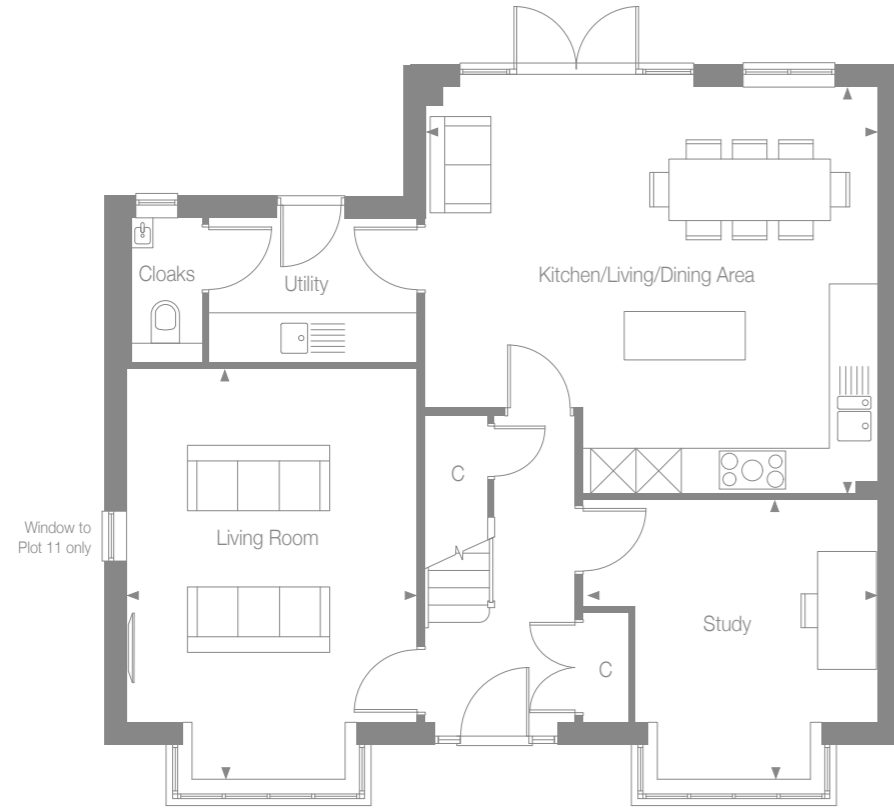
BERRY CROFT

Newick, East Sussex



THAKEHAM

GROUND FLOOR



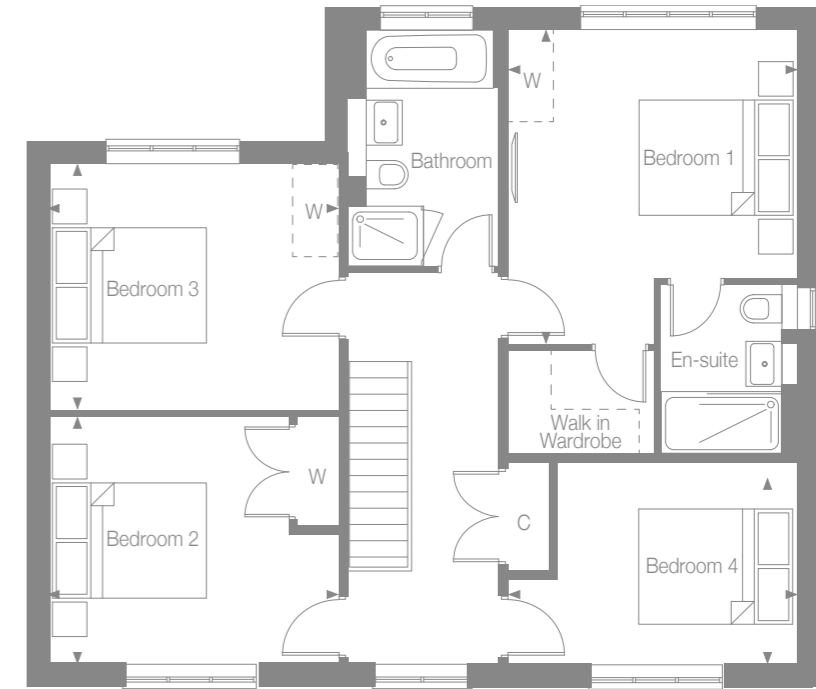
Kitchen/ Living/Dining Area	6.12m x 5.48m	20'1" x 18'0"
Living Room*	5.53m x 3.92m	18'1" x 12'10"
Study*	3.97m x 3.76m	13'0" x 12'4"

BERRY CROFT
Newick, East Sussex



THAKEHAM

FIRST FLOOR



Bedroom 1	4.21m x 3.97m	13'9" x 13'0"
Bedroom 2	3.92m x 3.33m	12'10" x 10'11"
Bedroom 3	3.92m x 3.33m	12'10" x 10'11"
Bedroom 4	3.97m x 2.72m	13'0" x 8'11"

BERRY CROFT
Newick, East Sussex

W - Wardrobe
 C - Cupboard
 * - Including bay
 - Space for wardrobe



THAKEHAM

THE CHELWOOD SPECIFICATION

BEAUTIFULLY DESIGNED KITCHENS

- Contemporary kitchen designs
- Soft close doors and drawers
- Laminate worktop and upstand
- One and half bowl stainless steel sink, with mono sink mixer tap by Vado
- AEG stainless steel multifunction oven
- AEG induction hob with pull out extractor hood
- Energy efficient integrated AEG dishwasher
- Energy efficient integrated AEG 70/30 split fridge/freezer
- Provision for washing machine and separate dryer in the utility

STYLISH BATHROOMS

- Contemporary white sanitaryware, with chrome accessories by Vado
- Floor standing concealed cistern WC
- White steel enamel bath with over bath shower screen
- Wall mounted bath/shower mixer tap by Vado
- Chrome towel radiator
- Porcelanosa wall tiling to selected areas
- Recessed mirror cabinet to en-suites where possible, please speak to a Sales Consultant to confirm layout

INTERIOR FINISHES

- Amtico floor tiling to hall, cloakroom, kitchen/dining, utility and bathrooms, with Cormar carpet in all remaining areas
- White painted flush doors, with contemporary ironmongery
- White painted staircase, newel posts and handrail
- Coordinated single paint finish to walls and satinwood paint finish on all internal joinery

ECOLOGY

- Hedgehog holes through gravel boards in fencing, to provide routes for hedgehogs
- Hedgehog houses in communal landscaped areas

SECURITY & PEACE OF MIND

- Mains fed smoke/heat detector, with battery backup
- Mains fed carbon monoxide detector, positioned adjacent to gas boiler
- 10 year NHBC Buildmark Warranty, including 2 year defect and emergency out of hours cover

EXTERNAL

- Timber external entrance door
- UPVC double glazed windows with French doors to the kitchen/living/dining area
- Closeboard fencing to rear gardens
- Landscaped front gardens and turfed rear gardens
- Paved paths and patio areas
- External tap in rear garden

HEATING, ELECTRICAL & LIGHTING

- Energy efficient combination boiler
- Underfloor heating on ground floor with gas fired radiator heating on first floor
- WiFi programmable heating controls
- LED downlights to hall, landing, kitchen/dining room, bathroom, en-suite and cloakroom with pendant lighting in remaining areas
- White sockets and switch plates in all areas (stainless steel in kitchen) with integrated USB charging in kitchen and to bedrooms 1- 3
- Multi-gang grid switch for kitchen appliances
- Chrome shaver socket in all bathrooms
- Lighting to all external doors with internal switch
- Wired for terrestrial TV to hall media cupboard
- Wired for Sky Q to living room and alternative second position with blank plate and all other rooms via Sky Q technology
- TV/satellite point in living room
- Electric car charging point
- Solar PV panels

BERRY CROFT

Newick, East Sussex