



THAKEHAM



The Tadworth

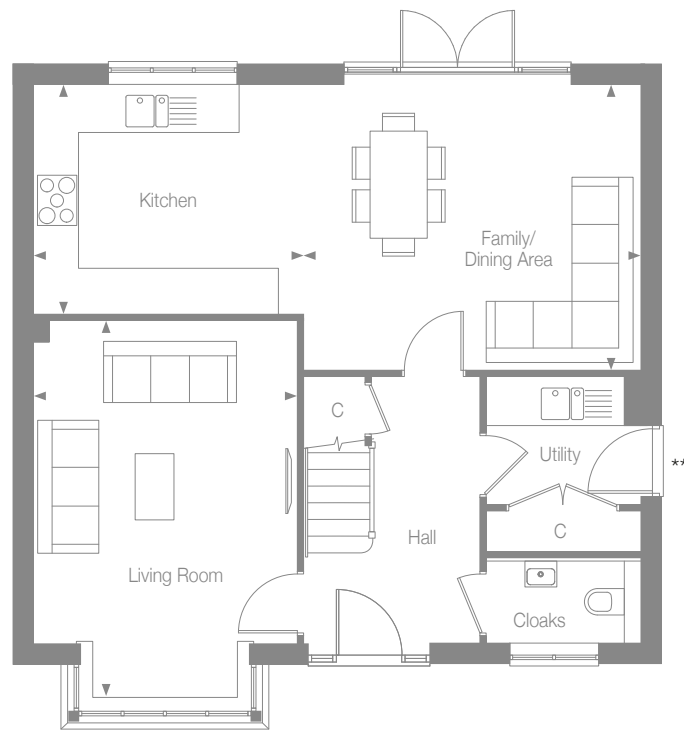
BERRY CROFT

Newick, East Sussex



THAKEHAM

### GROUND FLOOR



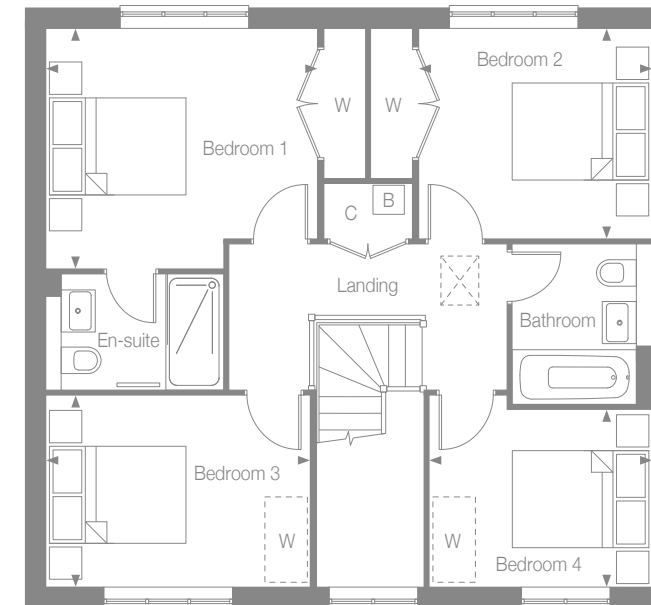
Kitchen	3.76m x 3.20m	12'4" x 10'6"
Family/Dining Area	4.71m x 3.96m	15'5" x 13'0"
Living Room*	3.66m x 5.26m	12'0" x 17'3"

**BERRY CROFT**  
Newick, East Sussex



THAKEHAM

### FIRST FLOOR



Bedroom 1	3.77m x 3.32m	12'4" x 10'10"
Bedroom 2	3.66m x 3.64m	12'0" x 11'11"
Bedroom 3	3.20m x 2.92m	10'6" x 9'7"
Bedroom 4	3.08m x 2.42m	10'1" x 7'11"

**BERRY CROFT**  
Newick, East Sussex

- W - Wardrobe
- C - Cupboard
- B - Boiler
- W (dashed) - Space for wardrobe
- \* - Including bay
- \*\* - Window to plot 37



THAKEHAM

## THE TADWORTH SPECIFICATION

### BEAUTIFULLY DESIGNED KITCHENS

- Contemporary kitchen designs
- Soft close doors and drawers
- Laminate worktop and upstand to kitchen
- Laminate worktop and upstand to utility room
- One and half bowl stainless steel sink, with mono sink mixer tap by Vado
- AEG stainless steel multifunction oven
- AEG induction hob with pull out extractor hood
- Energy efficient integrated AEG dishwasher
- Energy efficient integrated AEG 70/30 split fridge/freezer
- Provision for washing machine and separate dryer in the utility

### STYLISH BATHROOMS

- Contemporary white sanitaryware, with chrome accessories by Vado
- Floor standing concealed cistern WC
- White steel enamel bath with over bath shower screen
- Wall mounted bath/shower mixer tap by Vado
- Chrome towel radiator
- Porcelanosa wall tiling to selected areas
- Recessed mirror cabinet to en-suites where possible, please speak to a Sales Consultant to confirm layout

### INTERIOR FINISHES

- Amtico floor tiling to hall, cloakroom, kitchen/family/dining area, utility and bathrooms, with Cormar carpet in all remaining areas
- White painted flush doors, with contemporary ironmongery
- White painted staircase, newel posts and handrail
- Coordinated single paint finish to walls and satinwood paint finish on all internal joinery

### ECOLOGY

- Hedgehog holes through gravel boards in fencing, to provide routes for hedgehogs
- Hedgehog houses in communal landscaped areas

### SECURITY & PEACE OF MIND

- Mains fed smoke/heat detector, with battery backup
- Mains fed carbon monoxide detector, positioned adjacent to gas boiler
- 10 year NHBC Buildmark Warranty, including 2 year defect and emergency out of hours cover

### EXTERNAL

- UPVC double glazed windows with French doors to the kitchen/family/dining area
- Closeboard fencing to rear gardens
- Landscaped front gardens and turfed rear gardens
- Paved paths and patio areas
- External tap in rear garden

### HEATING, ELECTRICAL & LIGHTING

- Energy efficient combination boiler
- Underfloor heating on ground floor with gas fired radiator heating on first floor
- WiFi programmable heating controls
- LED downlights to hall, landing, kitchen, bathroom, en-suite and cloakroom with pendant lighting in remaining areas
- White sockets and switch plates in all areas (stainless steel in kitchen) with integrated USB charging in kitchen and to bedrooms 1 - 3
- Multi-gang grid switch for kitchen appliances
- Chrome shaver socket in all bathrooms
- Lighting to all external doors with internal switch
- Wired for terrestrial TV to hall media cupboard
- Wired for Sky Q to living room and alternative second position with blank plate, and all other rooms via Sky Q technology
- TV/satellite point in living room
- Electric car charging point
- Solar PV panels

BERRY CROFT

Newick, East Sussex