

Welcome

Welcome to Thakeham's community round table event for Land at the Springbok Estate.

We appreciate that Alfold has seen significant development over the past decade and much of this new development has not been of such a scale as to support the provision of new infrastructure.

Today, we would like to discuss what infrastructure the local community feel is needed in Alfold that could be delivered as part of our work on the Springbok Estate. We aim to create a cohesive set of plans for housing and infrastructure on the remainder of the site working in tandem with the goals and objectives for infrastructure in the Alfold Neighbourhood Plan.

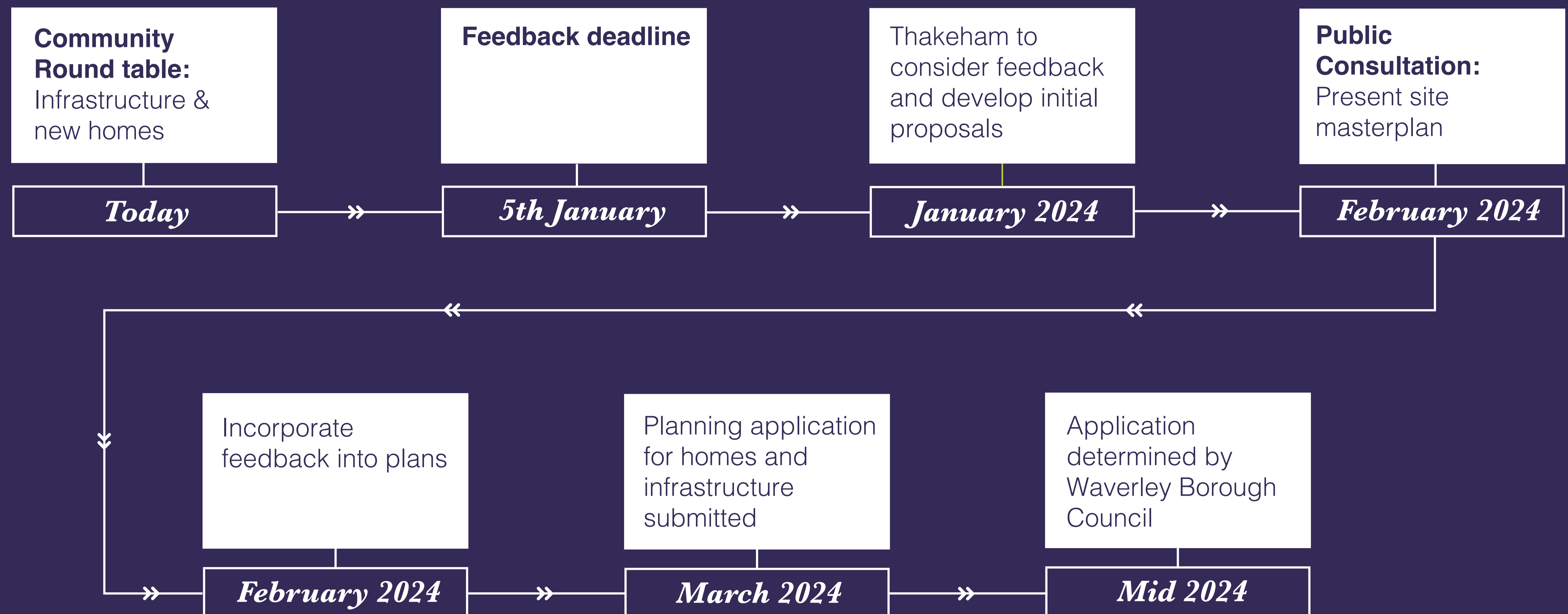


THAKEHAM

Engagement Process

Our community round table event is part of the ongoing engagement process as we develop a cohesive set of plans for the Springbok Estate.

The following timeline sets out our plans for engagement over the coming months.



Thakeham in *Alfold*

Thakeham has long recognised the importance of creating cohesive communities and as well as the importance of investing in services and assets, sees community business as a vital mechanism to achieve our ambition of being a sustainable, infrastructure-led community creator.



Renegades Youthgroup

After Thakeham was introduced to Renegades Youth Group, we learned that the group were fundraising for a new minibuss.

As part of Thakeham’s work to support the communities in which it works, we have donated £5000 towards the minibuss.



Alfold Church Cafe

Led by Thakeham Alfold Project Manager, Mark Tolley who got in touch with Alfold Church Cafe to discuss their needs.

Thakeham purchased the cafe a much-needed new dishwasher and banner flag.

Thakeham supports a range of local charities and organisations in Alfold. We recognise this as an important way of giving back to the community. As part of our important promises to the people and the communities we serve, we will work hard to build on our existing volunteering and charity partnerships.



Alfold Community Cafe with their new flag



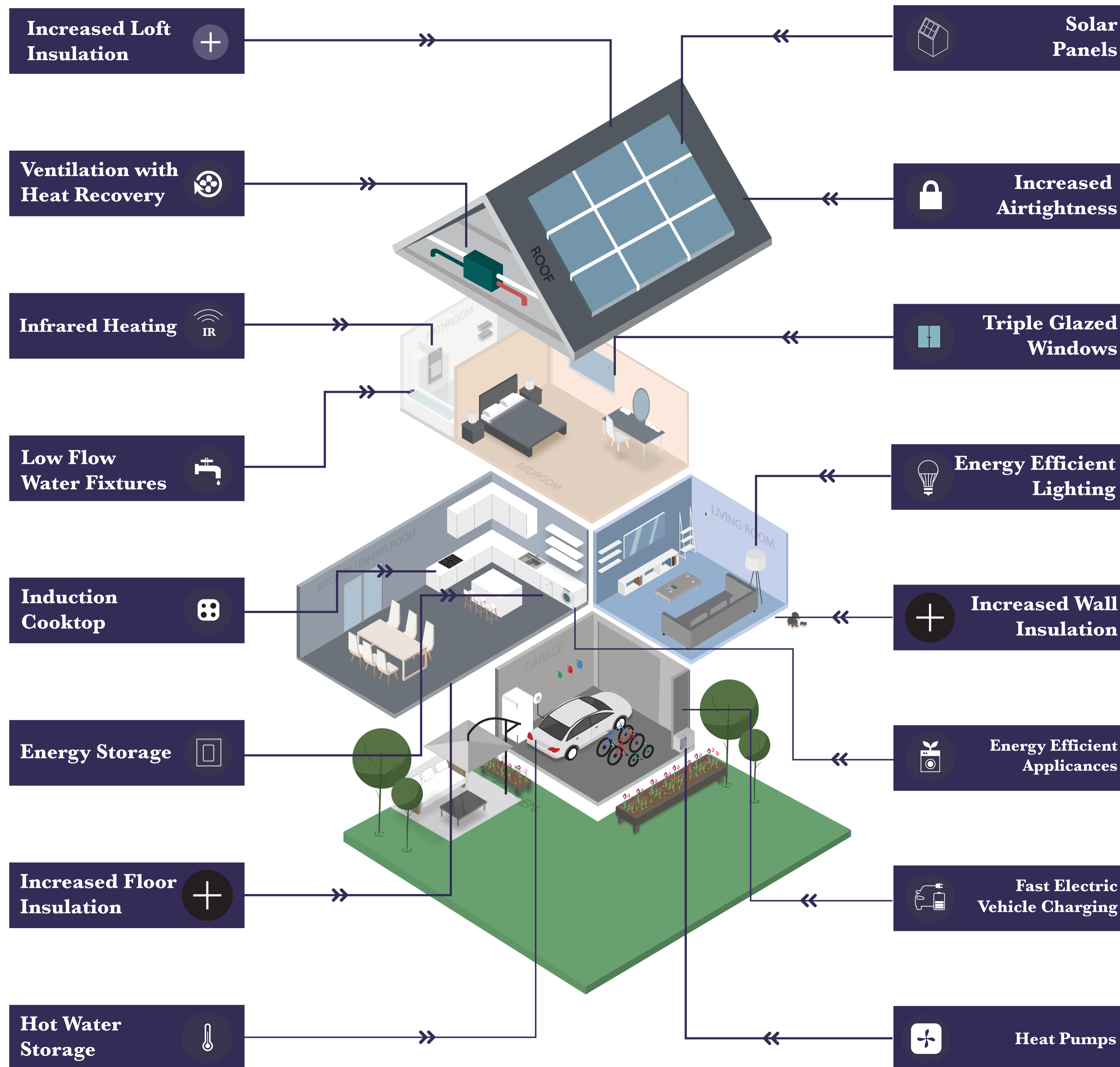
Mark Tolley delivering Christmas cards to Alfold Community Cafe.



Mark Tolley with the Alfold Community Cafe



Mark Tolley with St Nicholas Church, Alfold



Net zero carbon homes

From 2025, every Thakeham home will be net zero carbon in its lifetime operation.

This means that the amount of carbon emissions associated with the building's operational/regulated energy on an annual basis is zero or negative.

The measures which can help make Thakeham's homes net zero carbon are detailed in the infographic to the left.

Sustainability

Thakeham believes that climate change is one of the most significant environmental challenges of the 21st century, and that we have a responsibility to act now.

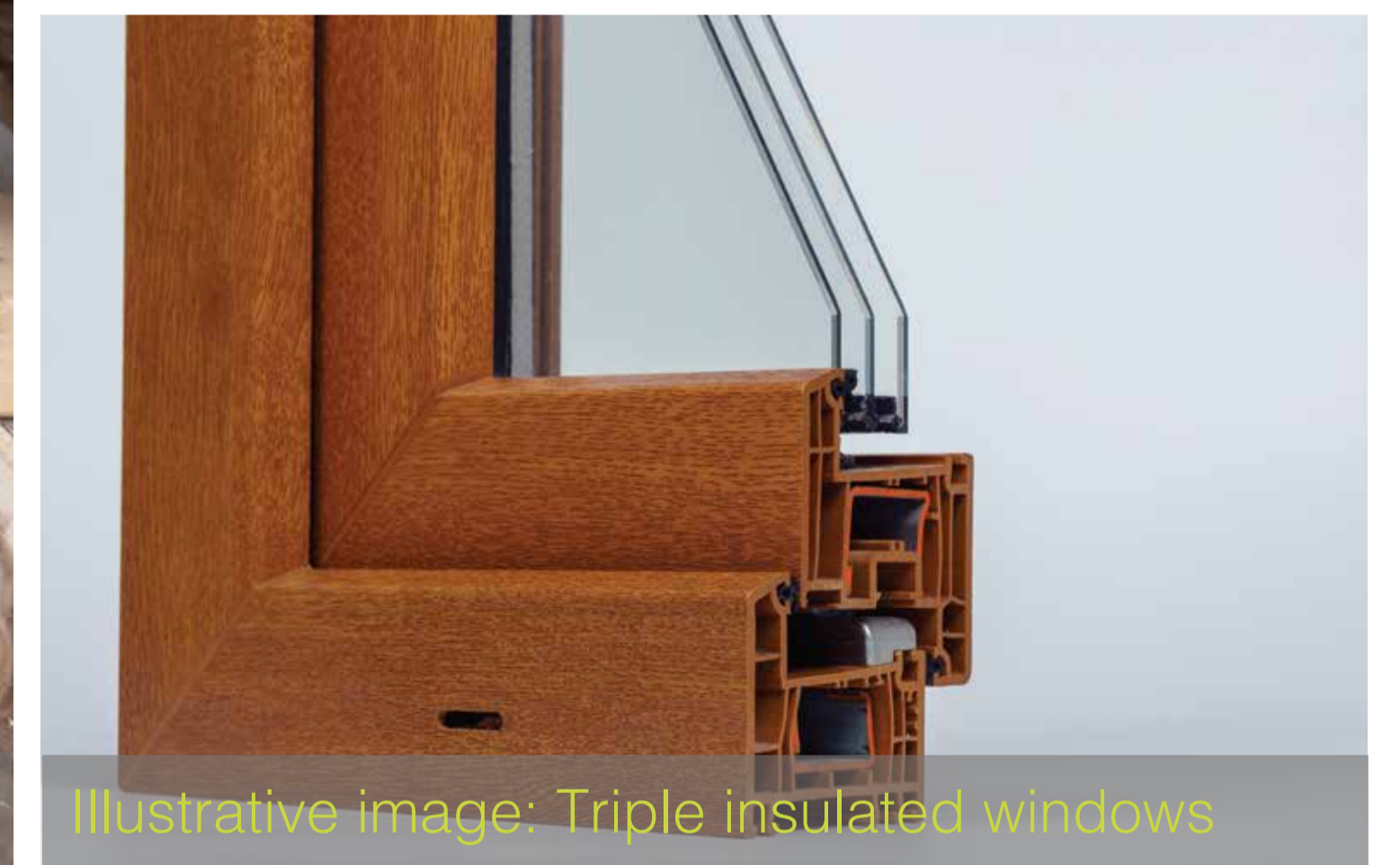
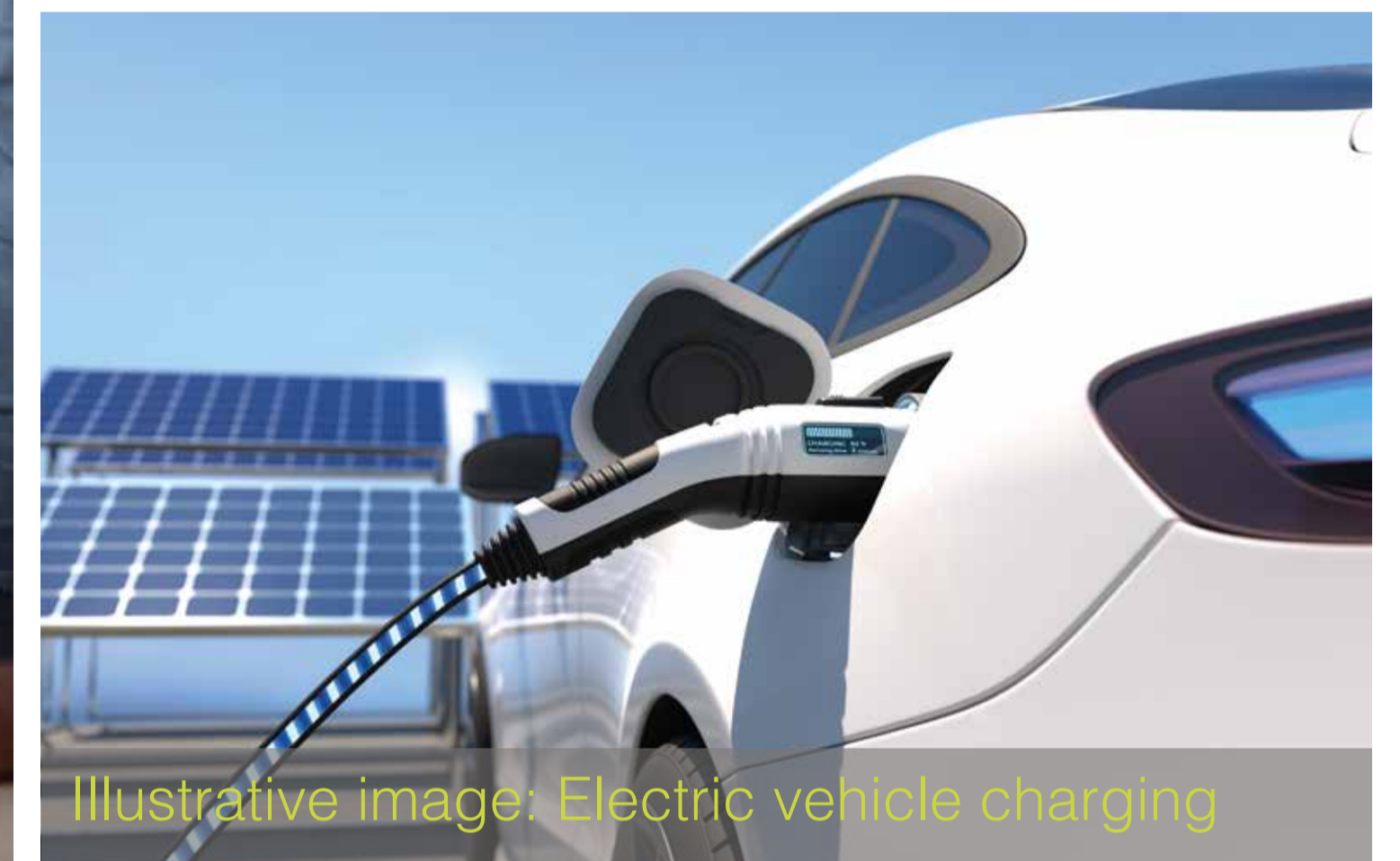
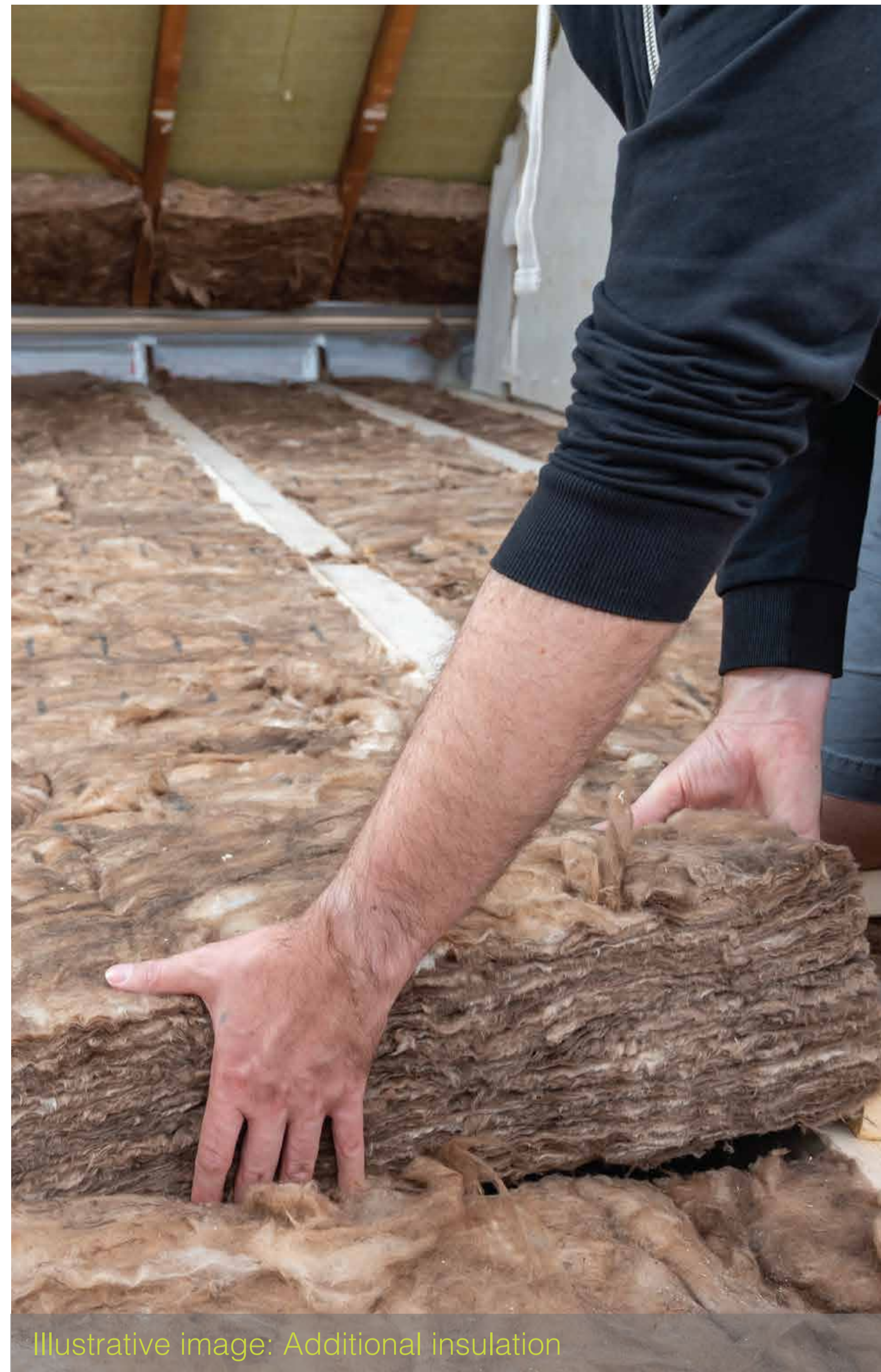
Delaying action on climate change will be costly for our natural environment, to humans and the economy, and we believe that urgent action is necessary to curb greenhouse gas emissions.

Thakeham is taking a highly proactive approach in responding to the climate crisis, setting ourselves challenging targets.

Carbon Neutral:

Thakeham became a verified carbon neutral business two years ahead of our 2025 target.

This commitment includes all of the carbon emissions from our business, including our business travel, fuel used by us on construction sites, and the energy used in our offices.



Next steps:

Thank you for attending today's community round table.

All of the materials used in today's session can be accessed via the website www.thakeham.com/alfold or using the QR code below.

 07778 665906

 alfold@thakeham.com






Dunsfold
Aerodrome

Land at
Springbok
Estate


Alfold
Crossways


Springbok Estate
(Consented)

Thakeham Homes

We're committed to creating new, extraordinary places, where the highest attention to detail makes all the difference.

By enabling zero carbon lifestyles, bringing people closer to nature, and inspiring true community stewardship, we're building for the future.

To achieve these goals, we also partner with like-minded organisations with a history of driving change, including the Future Homes Hub and Enterprise Car Club.

Based in Billingshurst, West Sussex, we're one of the leading housebuilders in the South of England, employing over 200 people directly, along with hundreds of subcontractors.

In 2023 we were named as one of the Sunday Times 'Best Places to Work' and have been recognised for our work with young people and veterans..



