



THAKEHAM



The Windlesham

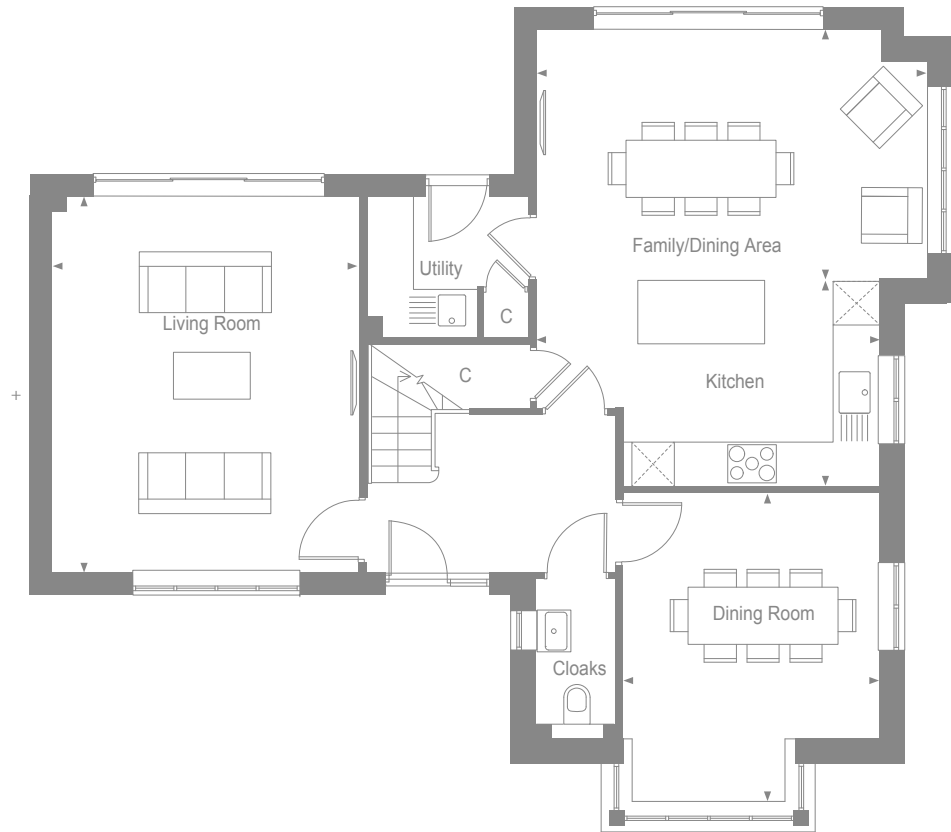
MANORWOOD

West Horsley, Surrey



THAKEHAM

GROUND FLOOR



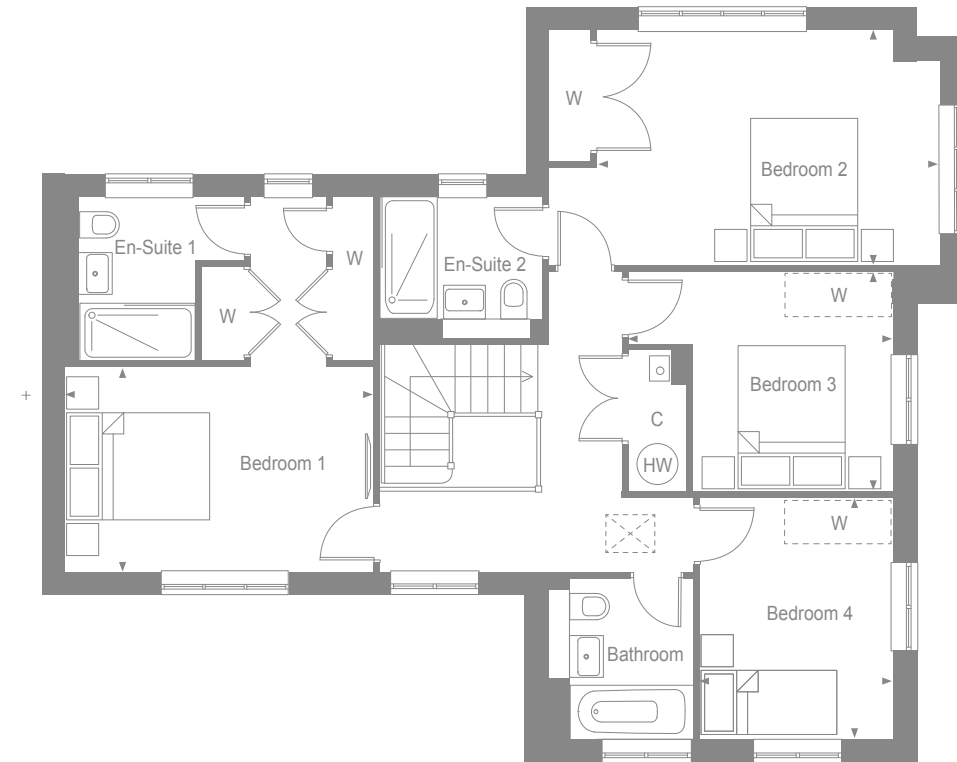
Kitchen	2.93m x 4.85m	9'6" x 15'9"
Family/Dining Area	3.51m x 5.53m	11'5" x 18'2"
Dining Room*	3.62m x 4.25m	11'8" x 13'9"
Living Room	4.34m x 5.30m	14'2" x 17'4"

MANORWOOD
West Horsley, Surrey



THAKEHAM

FIRST FLOOR



Bedroom 1	4.37m x 2.89m	14'3" x 9'5"
Bedroom 2	4.87m x 3.32m	15'9" x 10'9"
Bedroom 3	2.84m x 3.75m	9'3" x 12'3"
Bedroom 4	2.74m x 3.41m	8'9" x 11'2"

MANORWOOD
West Horsley, Surrey

- W - Wardrobe
- C - Cupboard
- W - Space for wardrobe
- W/D - Space for washer/dryer
- * - Including bay
- + - Alternative layouts to selected plots, speak to a sales consultant for full details



THAKEHAM

THE WINDLESHAM SPECIFICATION

BEAUTIFULLY DESIGNED KITCHENS

- Contemporary kitchen designs
- Soft close doors and drawers
- Laminate worktop and upstand
- Stainless steel sink, with mono sink mixer tap by Vado
- AEG stainless steel double oven
- Induction hob with pull out extractor hood
- Energy efficient integrated AEG dishwasher
- Energy efficient integrated AEG 70/30 split fridge/freezer
- Plumbing for washing machine and separate dryer in the utility

STYLISH BATHROOMS

- Contemporary white sanitaryware, with chrome accessories by Vado
- Floor standing concealed cistern WC
- White steel enamel bath with over bath shower screen
- Wall mounted bath/shower mixer tap by Vado
- Chrome summer use towel warmers
- Porcelanosa wall tiling to selected areas
- Recessed cabinet in bathroom and en-suite dependant on layout

INTERIOR FINISHES

- Amtico vinyl flooring to hall, cloakroom, kitchen/family/dining area, utility and bathrooms, with Cormar carpet in all remaining areas
- White painted flush doors, with contemporary ironmongery
- White painted staircase with Redwood newels and oak caps
- Coordinated single paint finish to walls and satinwood paint finish on all internal joinery

ECOLOGY

- Hedgehog holes through gravel boards in fencing, to provide routes for hedgehogs
- Hedgehog houses in communal landscaped areas

SECURITY & PEACE OF MIND

- Mains fed smoke/heat detector, with battery backup
- Mains fed carbon monoxide detector, positioned adjacent to gas boiler
- 10 year NHBC Buildmark Warranty, including 2 year defect and emergency out of hours cover

EXTERNAL

- Timber external entrance door
- UPVC double glazed windows with sliding doors to the kitchen/family/dining area and living room
- Closeboard fencing to rear gardens
- Landscaped front gardens and turfed rear gardens
- Paved paths and patio areas
- External tap in rear garden

HEATING, ELECTRICAL & LIGHTING

- Energy efficient combination boiler
- Underfloor heating on ground floor with gas fired radiator heating on first floor
- WiFi programmable heating controls
- LED downlights to hall, landing, kitchen, bathroom, en-suite and cloakroom with pendant lighting in remaining areas
- White sockets and switch plates in all areas (stainless steel in kitchen) with integrated USB charging in kitchen and bedrooms
- Multi-gang grid switch for kitchen appliances
- Chrome shaver socket in all bathrooms
- Lighting to all external doors with internal switch
- Wired for terrestrial TV to hall media cupboard
- Wired for Sky Q to living room and alternative second position with blank plate, and all other rooms via Sky Q technology
- TV/satellite point in living room
- Electric car charging point
- Solar PV panels

MANORWOOD

West Horsley, Surrey