

TEMPLEGATE

Keymer Road, West Sussex

The Wilmington

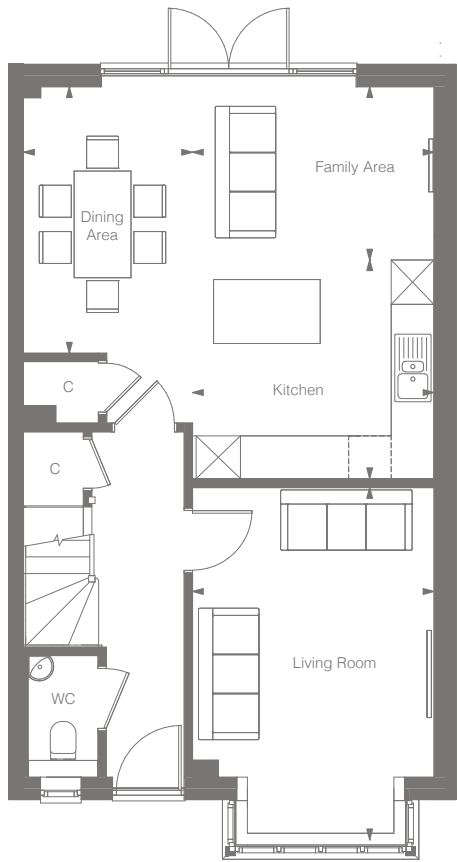
4 bedroom home



THAKEHAM

The Wilmington

4 bedroom home
127.8 sqm | 1376 sqft



GROUND FLOOR

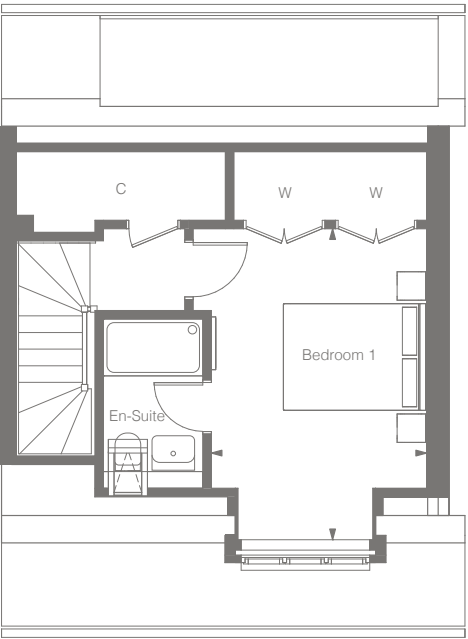
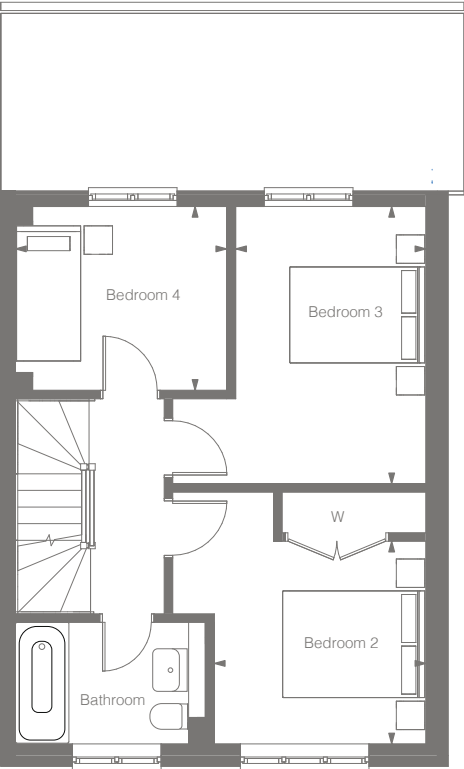
Kitchen Area	3.40m x 3.08m	11'2" x 10'1"
Dining Area	3.75m x 2.38m	12'3" x 7'10"
Family Area	3.40m x 2.44m	11'2" x 8'0"
Living Room	4.95m x 3.40m	16'3" x 11'2"

KEY: W — Wardrobe, C — Cupboard



FIRST FLOOR

Bedroom 2	2.97m x 2.85m	9'9" x 9'4"
Bedroom 3	3.90m x 2.67m	12'10" x 8'9"
Bedroom 4	2.97m x 2.59m	9'9" x 8'6"



SECOND FLOOR

Bedroom 1	4.38m x 3.03m	14'4" x 9'11"
-----------	---------------	---------------



SPECIFICATION

BEAUTIFULLY DESIGNED KITCHENS

- » Contemporary kitchen design
- » Soft close doors and drawers
- » Laminate worktop and upstand to kitchen and utility
- » Stainless steel sink, with mono sink mixer tap by Vado
- » AEG stainless steel double oven
- » Induction hob with integrated extractor hood
- » Energy efficient integrated AEG dishwasher
- » Energy efficient integrated AEG 70/30 split fridge/freezer
- » Provision for washer/dryer in utility room

STYLISH BATHROOMS

- » Contemporary white sanitaryware, with chrome accessories by Vado
- » Floor standing concealed cistern WC
- » White steel enamel bath with over bath shower screen, shower in en suite
- » Wall mounted bath/shower mixer tap by Vado
- » Chrome towel warmers
- » Ceramic wall tiling to selected areas

INTERIOR FINISHES

- » Amtico vinyl flooring to hall, cloakroom, kitchen/dining and bathrooms, with Cormar carpet in all remaining areas
- » White painted doors, with contemporary ironmongery
- » White painted staircase with redwood newels and oak caps
- » Coordinated single paint finish on wall and satinwood paint finish on all internal joinery

ECOLOGY

- » Hedgehog holes through gravel boards in fencing, to provide routes for hedgehogs where possible
- » Hedgehog houses in communal landscaped areas

SECURITY & PEACE OF MIND

- » Mains fed smoke/heat detector, with battery backup
- » 10 year NHBC Buildmark Warranty, including 2 year defect and emergency out of hours cover

EXTERNAL

- » UPVC double glazed windows with sliding doors to dining/family area and living room
- » Closeboard fencing to rear gardens
- » Landscaped front gardens and turfed rear gardens
- » Paved paths and patio areas
- » External tap in rear garden

HEATING, ELECTRICAL & LIGHTING

- » External Air Source Heat Pump with Hot Water Cylinder
- » Underfloor heating on ground floor with radiator heating on first floor
- » WiFi programmable heating controls
- » LED downlights to hall, landing, kitchen, bathroom, en-suite and cloakroom with pendant lighting in remaining areas
- » White sockets and switch plates in all areas (stainless steel in kitchen) with integrated USB charging in kitchen and selected bedrooms
- » Multi-gang grid switch for kitchen appliances
- » Chrome shaver socket in all bathrooms
- » Lighting to all external doors with internal switch
- » Wired for terrestrial TV to hall media cupboard
- » Wired for Sky Q to living room and alternative second position with blank plate
- » TV/satellite point in living room
- » PV Panels to roof
- » Electric car charging point
- » Prewire and space provision for battery storage

TEMPLEGATE

Keymer Road, West Sussex