



THAKEHAM  
AT

WELBORNE

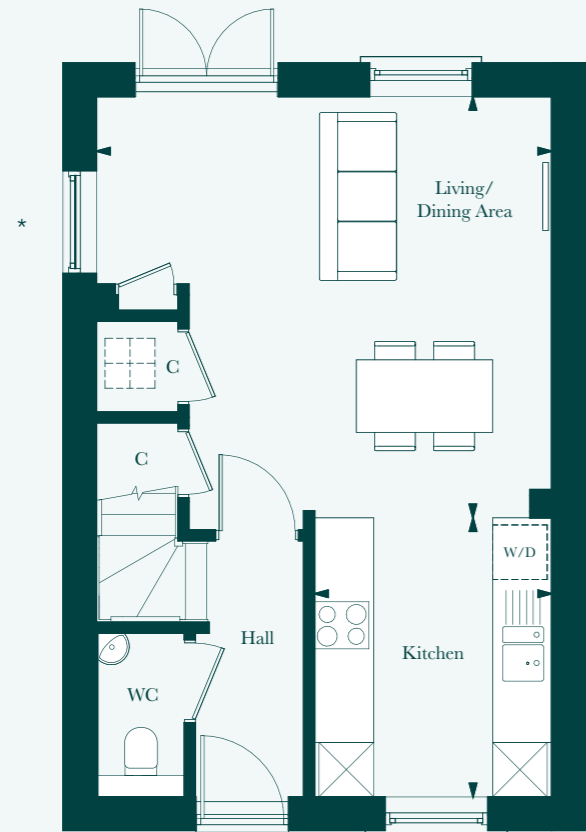
# *The Burlington*

*3 bedroom home*



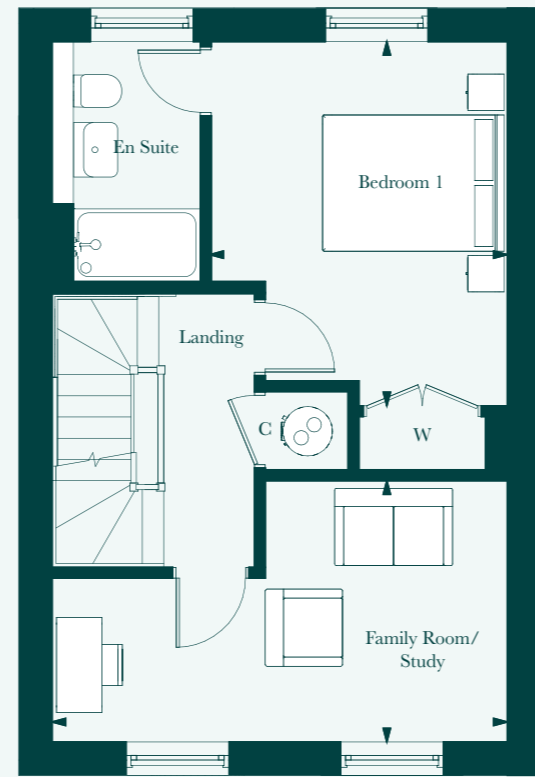
# The Burlington

3 bedroom home  
116 sq m | 1,140 sq ft



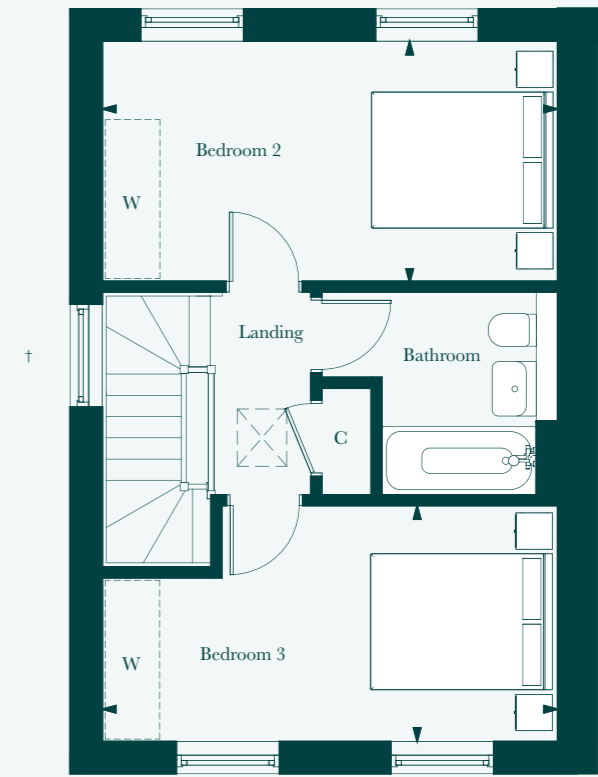
GROUND FLOOR

Living Room/Dining	5m x 4.6m	16'6" x 15'2"
Kitchen	2.6m x 3m	18'7" x 10'1"



FIRST FLOOR

Family Room/Study	5m x 2.8m	16'6" x 9'5"
Bedroom 1	3.2m x 4m	10'8" x 13'2"



SECOND FLOOR

Bedroom 2	5m x 2.6m	16'6" x 8'8"
Bedroom 3	5m x 2.6m	16'6" x 8'6"

- C Cupboard
- W Wardrobe
- Heat Pump
- W/D Washer/Dryer space
- Loft Hatch
- Heat Pump Cylinder
- Space for Wardrobe

\* No window to plots 69, 70, 88, 90, 91, 92, 93, 134 & 136  
† Window to plots 69, 70, 88, 90, 91, 92, 93, 94, 134 & 136 only



## BEAUTIFULLY DESIGNED KITCHENS

- Shaker-style kitchen designs
- Soft close doors and drawers
- Laminate worktop and upstand
- Stainless steel sink, with cross head mixer tap by Vado
- Electrolux stainless steel oven
- Induction hob with integrated extractor hood
- Energy efficient integrated Electrolux dishwasher
- Energy efficient integrated Electrolux 70/30 split fridge/freezer
- Provision for washer/dryer in cupboard – where applicable

## STYLISH BATHROOMS

- Stylish white sanitaryware, with chrome accessories by Vado
- Floor standing concealed cistern WC
- White steel enamel bath with over bath shower screen, shower in en suite
- Deck mounted bath/shower mixer tap by Vado
- Feature traditional chrome towel rail
- Ceramic tiles to selected walls
- Stone effect Amtico flooring

## INTERIOR FINISHES

- Amtico vinyl flooring to hall, cloakroom, kitchen/dining, with Abingdon flooring in all remaining areas
- White 3 panel moulded doors, with complementary ironmongery
- White painted staircase, newel posts and handrail
- Coordinated single paint finish on wall and satinwood paint finish on all internal joinery
- Interior designed colour palette options

## ECOLOGY

- Hedgehog holes through gravel boards in fencing, to provide routes for hedgehogs where possible
- Integrated bat and bird boxes to selected homes

## SECURITY & PEACE OF MIND

- Mains fed smoke/heat detector, with battery backup
- 10 year NHBC Buildmark Warranty, including 2 year defect and emergency out of hours cover

## EXTERNAL

- 6 Panel Timber door with traditional stainless steel ironmongery
- UPVC double glazed Georgian style sash windows with polished chrome hardware
- French doors to dining/family area and living room – where applicable
- Closeboard or woven panel fencing to rear gardens – please speak to our Sales Team
- Landscaped front gardens and turfed rear gardens
- Paved paths and patio areas
- External tap in rear garden
- Black powder coated steel external wall lanterns

## HEATING, ELECTRICAL & LIGHTING

- Internal Water Source Heat Pump with Hot Water cylinder and separate Buffer Tanks
- Underfloor Heating to Ground Floor, with Fan Coil Units heating to all bedrooms (providing heating and comfort cooling) and radiator heating to other upper floor rooms (excluding walk-in wardrobes)
- Wi-Fi controllable Fan Coil units to bedrooms
- Programmable thermostat radiators (other upper floor rooms, excluding walk-in wardrobes) and underfloor heating (ground floor)
- LED downlights to hall, landing, kitchen, bathroom, en suite and cloakroom with pendant lighting in remaining areas
- Brushed steel socket to kitchen with white sockets and switch plates in all other areas with integrated USB charging in kitchen and bedroom 1
- Multi-gang grid switch for kitchen appliances
- White shaver socket in all bathrooms
- Lighting to all external doors with internal switch
- Connection to a site-wide gigabit-capable telecommunications network, which will include FIRS (Fibre Integrated Reception System) to distribute television and satellite services throughout the development
- Photovoltaic (PV) Panels to roof
- Electric car charging point



THAKEHAM