



THAKEHAM
AT

WELBORNE

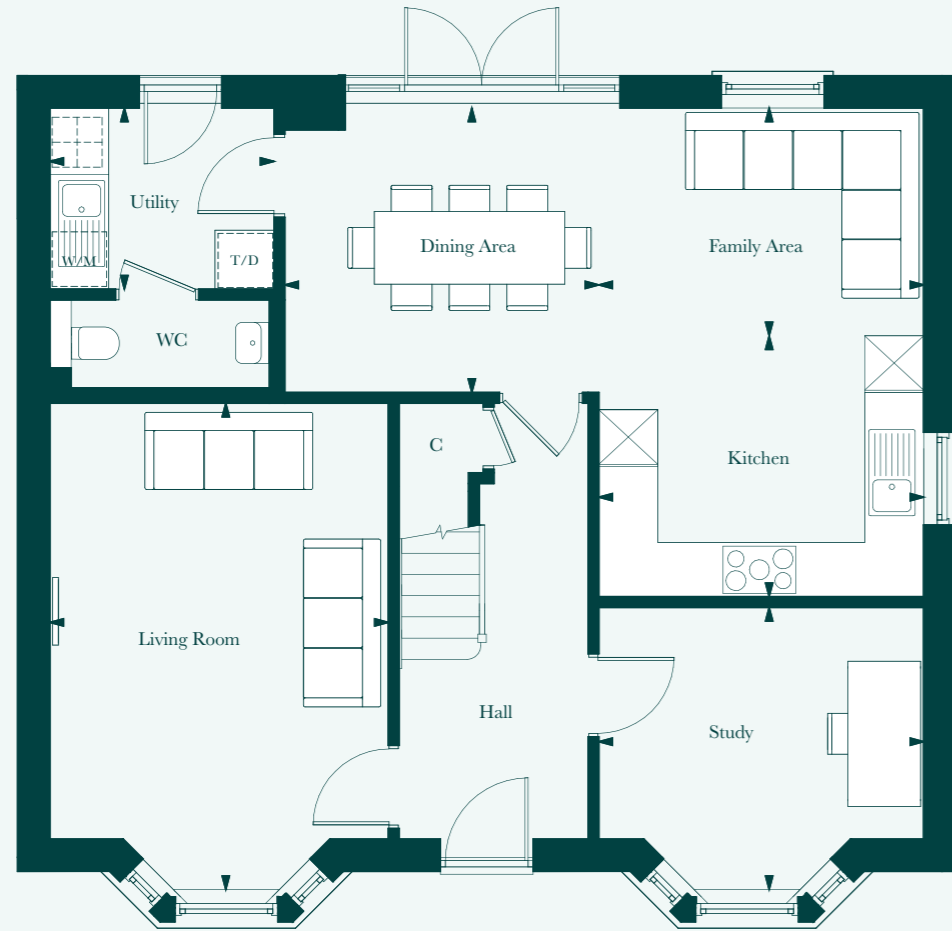
The Kensington

4 bedroom home



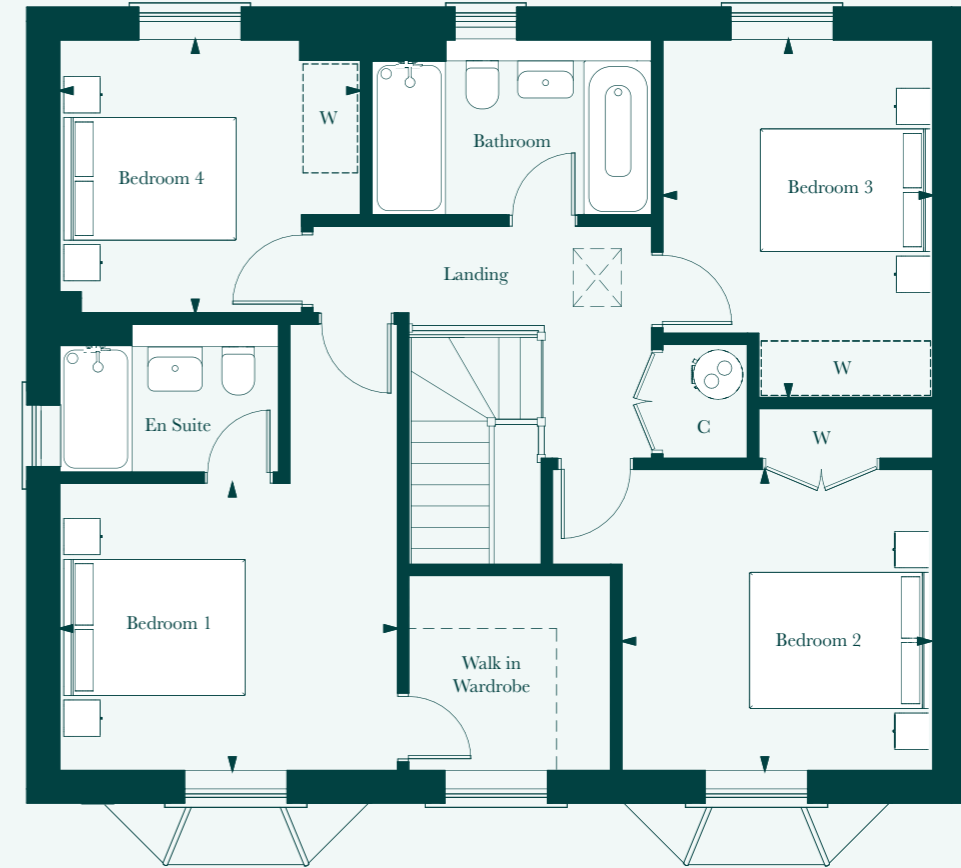
The Kensington

4 bedroom home
157 sq m | 1,690 sq ft



GROUND FLOOR

Living Room	3.7m x 5.3m	12'3" x 17'7"
Dining Area	3.6m x 3.1m	11'4" x 10'3"
Kitchen	3.5m x 2.8m	11'9" x 9'4"
Family Area	3.5m x 2.5m	11'9" x 8'3"
Study	3.5m x 3.1m	11'9" x 10'2"
Utility	2.4m x 1.9m	8'1" x 6'7"



FIRST FLOOR

Bedroom 1	3.7m x 3.1m	12'3" x 10'5"
Bedroom 2	3.4m x 3.3m	11'3" x 10'11"
Bedroom 3	2.9m x 3.9m	9'9" x 12'11"
Bedroom 4	3.3m x 3m	10'11" x 9'11"



- C Cupboard
- W Wardrobe
- Heat Pump
- W/D Washing Machine space
- T/D Tumble Dryer space
- Loft Hatch
- Heat Pump Cylinder
- Space for Wardrobe

BEAUTIFULLY DESIGNED KITCHENS

- Shaker-style kitchen designs
- Soft close doors and drawers
- Composite worktop and upstand to kitchen and utility
- Feature ceramic Belfast sink, with polished chrome traditional style mixer tap by Vado
- AEG stainless steel double oven and integrated microwave
- Induction hob with pull out extractor hood
- Energy efficient integrated AEG dishwasher
- Energy efficient integrated AEG 70/30 split fridge/freezer
- Provision for washer and separate tumble dryer in utility room – where applicable

STYLISH BATHROOMS

- Stylish white sanitaryware, with traditional style chrome accessories by Vado
- Floor standing concealed cistern WC
- White steel enamel bath with over bath shower screen
- Concealed thermostatic shower valve by Vado
- Fixed shower head with additional hand held shower outlet
- Feature traditional chrome towel rail
- Shaker style vanity unit with undercounter storage in bathroom and en suites with framed bespoke mirror above
- Ceramic wall tiling to selected walls
- Stone effect Amtico flooring

INTERIOR FINISHES

- Amtico herringbone floor tiling to hall, cloakroom, kitchen/dining, with Abingdon flooring in all remaining areas
- White 3 panel moulded doors, with complementary ironmongery
- Traditional style white painted staircase with feature turned spindles, redwood stop-chamfered newels and oak caps
- Coordinated single paint finish to walls and satinwood paint finish on all internal joinery
- Interior designed colour palette options

ECOLOGY

- Hedgehog holes through gravel boards in fencing, to provide routes for hedgehogs where possible
- Integrated bat and separate bird boxes – to selected houses

SECURITY & PEACE OF MIND

- Mains fed smoke/heat detector, with battery backup
- 10 year NHBC Buildmark Warranty, including 2 year defect and emergency out of hours cover

EXTERNAL

- 6 Panel Timber door with traditional stainless steel ironmongery
- UPVC double glazed Georgian style sash windows with polished chrome hardware
- French doors to family/dining area and living room – where applicable)
- Closeboard or woven panel fencing to rear gardens – please speak to our Sales Team
- Landscaped front gardens and turfed rear gardens
- Paved paths and patio areas
- External tap in rear garden
- Black powder coated steel external wall lanterns

HEATING, ELECTRICAL & LIGHTING

- Internal Water Source Heat Pump with Hot Water cylinder and separate Buffer Tanks
- Underfloor Heating to Ground Floor, with Fan Coil Units heating to all bedrooms (providing heating and comfort cooling) and radiator heating to other upper floor rooms (excluding walk-in wardrobes)
- Wi-Fi controllable Fan Coil Units to bedrooms
- Programmable thermostat radiators (other upper floor rooms, excluding walk-in wardrobes) and underfloor heating (ground floor)
- LED downlights to hall, landing, kitchen, bathroom, en suite and cloakroom with pendant lighting in remaining areas
- Brushed steel socket to kitchen with white sockets and switch plates in all other areas with integrated USB charging in kitchen and bedroom 1
- Multi-gang grid switch for kitchen appliances
- White shaver socket with built in toothbrush charger in all bathrooms
- Lighting to all external doors with internal switch
- Connection to a site-wide gigabit-capable telecommunications network, which will include FIRS (Fibre Integrated Reception System) to distribute television and satellite services throughout the development
- Photovoltaic (PV) Panels to roof
- Electric car charging point



THAKEHAM